

**LIVE UNITED**  
**United Way**   
UNITED WAY TAR RIVER REGION

# 2015 ANNUAL REPORT



# MISSION

STATEMENT

We unite people and resources to build a stronger community.

# VISION

STATEMENT

We will be champions of our community, empowering individuals and improving lives, while striving for IDEALS that facilitate lasting, positive change.

# VALUE

STATEMENTS

## I

Integrity ~ We practice care, compassion and honesty in the stewardship of resources and relationships entrusted to us by our community.

## D

Diversity ~ We value each person's unique gifts that strengthen our community through individual experiences, skills and resources.

## E

Excellence ~ We focus on achieving the highest standards of organizational excellence and are committed to achieving our mission and vision.

## A

Accountability ~ We ensure effective, responsible, equitable and ethical management of the resources given to us by our community.

## L

Leadership ~ We present a strong, united voice that inspires people to build a better, more self-sufficient community.

## S

Solutions ~ We work collaboratively, effectively and strategically to improve pressing local health and human service needs, while creating a caring and responsive community.

# OUR UNITED WAY AT WORK

## Contents

- 3 Introduction from United Way Leadership**  
*Message from the Board Chair & Executive Director  
2015 Board of Directors & Staff*
- 4 Financial Statement**  
*Financial Summary for the Year Ended June 2015*
- 5 Our Impact**  
*Our impact in the community through Education, Health & Income  
Features success stories of program recipients*
- 6 Campaign Highlights and Awards**  
*Collection of campaign activities and award recognition  
Features Cummins-Rocky Mount Engine Plant, 2015 Spirit of NC  
Award Winner*
- 8 Employee, Corporate and Foundation Recognition**  
*Workplace campaigns, Corporate & Foundation contributors*
- 10 Landmark Leadership Foundation**  
*Members of the Tocqueville Society, Nashcombe Circle, Tar River  
Circle, Coastal Plain Circle, Gateway Circle*
- 12 Community Development & Initiatives**  
*NC 2-1-1, Emergency Food & Shelter Program & More*
- 14 Reflections**  
*2015 Reflections on United Way activities & events*
- 15 Special Thanks**  
*Acknowledgment of other businesses and supporters that  
strengthen United Way efforts*

# UNITED WAY MESSAGE

Dear Friends,

United Way Tar River Region has been working in our community 64 years improving the quality of life for local citizens, friends and neighbors. By funding 35 community-based health and human service programs in partnership with 24 nonprofit partners, over 500 volunteers and 15,000 donors, United Way Tar River Region positively impacts 75,000 lives each year in Edgecombe and Nash counties.

By focusing funding on our communities' most pressing needs in the areas of Education, Health, and Income & Independence, United Way encourages self-sufficiency and enhanced quality of life. We are proud of our efficiency, accountability and strategic goal to drive community solutions that tackle some of our greatest challenges.

United Way Tar River Region is dedicated to our mission to unite people and resources to build a stronger community. During its history, United Way Tar River Region has raised and invested well over 50 million dollars into our local community with the ultimate goal of higher quality of life for all.

Sincerely,

Gary Fazio  
2014-2015 Board Chair

Ginny Mohrbutter  
Executive Director



## BOARD OF DIRECTORS

**Gary Fazio**  
Boice-Willis Clinic, PA  
President/Chairperson

**Wick Baker**  
Vidant Edgecombe Hospital

\***Janie Bauer**  
Retired – At Large Member

\***Jonathan Boone**  
City of Rocky Mount  
VP/Fundraising (Campaign)

\***Robert (Bob) Boyd**  
Retired – Cummins – Rocky Mount  
Engine Plant – VP/Governance

\***Angela Burton**  
Word Tabernacle Church  
Co-Chair VP/Planning

**Ron Ellis**  
Cummins-Rocky Mount Engine Plant

**John Farrelly**  
Edgecombe County Public Schools

\***Gerry Felton**  
PNC Bank  
At Large Member

**Joe Garner**  
New Standard Corporation

\***Dorsey Glover**  
Nash Rocky Mount Public Schools  
VP/Finance

\***David Green**  
Battie, Winslow, Scott & Wiley, PA  
Secretary

**Dr. Meera Kelley**  
Nash Health Care Systems

**Zee Lamb**  
Nash County Government

**Robin Latham**  
Nash Community College

**Dave Lavelly**  
OptiCare Managed Vision

**Jimmy Matthews**  
McGladrey LLP

**Rick McMahon**  
Retired Superintendent – Nash Rocky  
Mount Public School System

**Ashley Miles**  
Berry Plastics

\***Chris Miller**  
Miller Consulting  
Rocky Mount City Council  
Immediate-Past President (2012)

**Eric Miller**  
Retired - Hospira, Inc.

**Lee Milligan**  
Retired – Business Consultant

**Thomas (Thom) Moton**  
City of Rocky Mount

**Tom Myers**  
Wells Fargo Bank

**J. Graham Nelson**  
Davenport Autopark

\***Dr. Haywood Parker**  
Truth Tabernacle Ministries  
VP/Community Investment

**Ken Pierce**  
Tyson Foods, Inc.

**Lou Reda**  
Lou Reda's An American Table

\***Dr. Keith Smith**  
Nash Community College  
VP/Community Development

\***Michael Smith**  
Retired – Hospira  
VP/Resource Development

\***Tommy Stockdale**  
Eaton Corporation  
At Large Member

\***Christy Taylor**  
Express Employment Professionals  
President-Elect

\***John Turnage**  
Southern Credit Adjusters  
At Large Member

**Vanessa Whitaker**  
Southern Bank

\***Mark Wilson**  
Rocky Mount Telegram  
VP/Marketing & Communications

\***Craig Worthy**  
Bodde-Noell Enterprises, Inc.  
Co-Chair VP/Planning

**Dr. Molly Wyatt**  
NC Wesleyan College

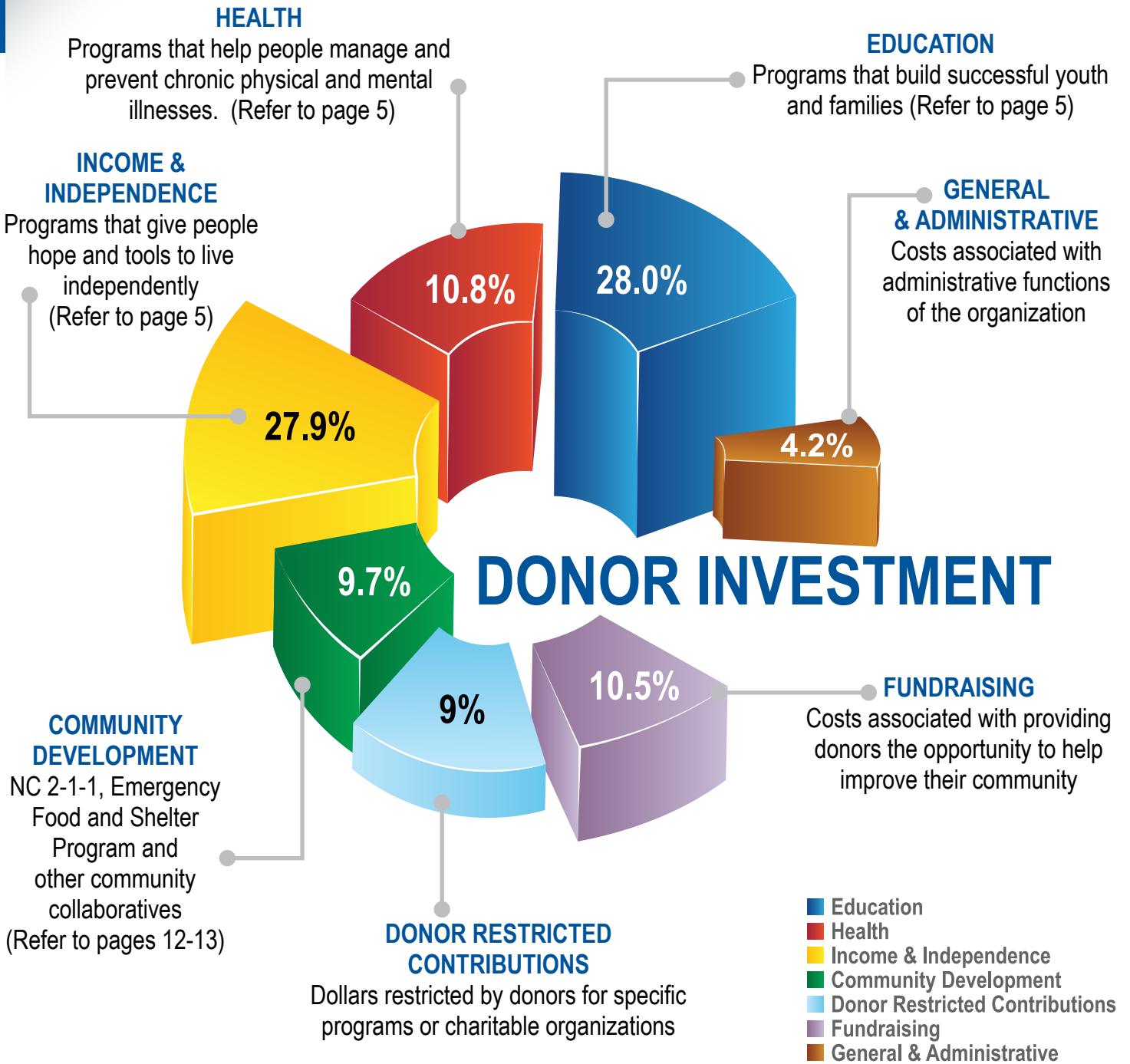
*\*indicates Executive Board member*

### UNITED WAY STAFF:

Ginny Mohrbutter, Executive Director • Alan Davis, Assistant Director/CFO • Tamika Joyner, Donor & Volunteer Relations Manager  
Mallory Joyner, Resource Development Coordinator • Elizabeth Scott, Administrative & Impact Specialist



# FINANCIAL HIGHLIGHTS



United Way Tar River Region has celebrated another successful year. Bunch and Company, LLP has given United Way an unmodified opinion on our financial statements for the year ended June 30, 2015. This is a major demonstration of our commitment to ensure the highest level of accountability to our donors and the community at-large.

< Alan Davis, Assistant Director/CFO & Dorsey Glover, VP of Finance

# OUR IMPACT

We are working across the Twin-County region to develop and implement strategies that make a difference for our biggest challenges. We support programs, services and initiatives that deliver results in the areas of **EDUCATION**, **INCOME & HEALTH**. Your donations support over 36 local health and human services programs through our United Way and 24 Funded Partners.

## EDUCATION: Building Successful Youth and Families

We have facilitated programs that help our youth succeed academically and graduate from high school with a successful transition to work or higher education. As a result, **5,242** youth were empowered with knowledge and skills needed to become more productive citizens

Association for the Learning Disabled & Handicapped (ALDH)  
Boy Scouts - East Carolina Council  
Boys & Girls Clubs of Nash/Edgecombe Counties  
Strategic Twin Counties Educational Partnership (STEP)  
Communities In Schools of the Rocky Mount Region  
Down East Partnership for Children  
Girl Scouts – North Carolina Coastal Pines  
Harrison Family YMCA  
Peacemakers Family Center of Rocky Mount, LLC



## INCOME & INDEPENDENCE: Increasing Self-Sufficiency

We have helped people connect to a sustainable network of safety net organizations offering a variety of services, referrals, and case management resources; which includes food and shelter. As a result, **183,463** meals were served to fight hunger and **58,564** lives were given hope and tools to live independently.

American Red Cross, Frederick E. Turnage Chapter  
Meals on Wheels of Rocky Mount  
Meals on Wheels of Tarboro  
My Sisters House  
Tarboro Community Outreach  
Tri-County Industries  
The Salvation Army  
United Community Ministries  
Volunteers Offering Independent Care for the Elderly (VOICE)



## HEALTH: Creating a Healthier Community

We have targeted programs and services that provide the education and services that promote a healthy lifestyle and help people manage and prevent chronic physical and mental illnesses. As a result, **7,006** people improved their health.

Christian Fellowship Home  
Dunbar Community Development Club  
Harrison Family YMCA  
Mental Health America of the Tar River Region  
Princeville Senior Center  
The Salvation Army  
The Wright's Center  
Tar River Mission Clinic



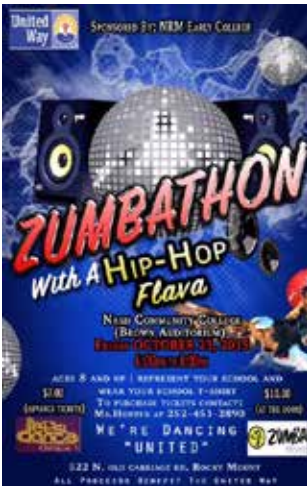
*The Snapshots of Success is a traveling photo exhibit that features local United Way donors and recipients of United Way Funded programs. Special Thanks to our Snapshots of Success participants: Carolyn Owens, Rebecca Wells, Taylor Wells and the program recipients at Peacemakers.*



# CAMPAIGN HIGHLIGHTS



Nash County Government sponsors 3rd Annual Monster Dash 5k Race and 1 mile Fun Run. Over 250 runners participated in the race.



Nash-Rocky Mount School hosts inaugural Zumbathon to benefit United Way. Special thanks to Maressa Hunter for organizing.





# CAMPAIGN AWARD WINNERS

These awards are based on per employee giving. Each recipient received an award and an on-site visit from United Way representatives during our Appreciation Patrol. It is our chance to give an extra "thank you" for their continued support of United Way and our community.

### DIAMOND AWARDS

*(100% participation & \$176 per capita and above)*  
 Association for Learning Disabled and Handicapped  
 Boddie-Noell Enterprises, Inc.  
 Express Employment Professionals  
 First Carolina Bank  
 McGladrey  
 Princeville Senior Center  
 United Way Tar River Region

### PLATINUM AWARDS

*(\$176 per capita and above)*  
 Cummins Rocky Mount Engine Plant  
 Davenport Autopark  
 Dunbar Community Development Club  
 Eaton Corporation  
 Piedmont Natural Gas  
 Stifel, Nicolaus & Company, Incorporated  
 Universal Leaf North America U.S., Inc. - Corporate

### GOLD AWARDS (\$126 - \$175 per capita)

PNC  
 Tar River Mission Clinic  
 The Wright's Center  
 UPS

### SILVER AWARDS (\$76 - \$125 per capita)

Boys & Girls Clubs  
 Bunch & Company, L.L.P.  
 Christian Fellowship Homes  
 City of Rocky Mount  
 Communities In Schools of the  
 Rocky Mount Region  
 Great American Cookies  
 Meals On Wheels of Rocky Mount, Inc.  
 Nash Community College  
 New Standard Corporation  
 Poyner Spruill LLP  
 Rocky Mount Telegram

### BRONZE AWARDS (\$50 - \$75 per capita)

Boy Scouts  
 Brame Specialty Co., Inc.  
 My Sister's House, Inc.  
 New Standard Corporation  
 The Salvation Army

### HONORABLE MENTION AWARDS

*(\$30 - \$49 per capita)*  
 Boice-Willis Clinic  
 Down East Partnership for Children  
 Nash County Government  
 Nash-Rocky Mount Schools  
 Rocky Mount Family YMCA, Inc.  
 Southern Bank & Trust Company  
 Suddenlink Communications  
 Target Store  
 Telco Credit Union  
 Tyson Foods  
 V.O.I.C.E.



Nash-Rocky Mount Public Schools Central office attains 100% participation for the United Way campaign.



Davenport Autopark sponsors the 5th Car Giveaway promotion for United Way.

### Cummins-Rocky Mount Engine Plant receives Spirit of NC Award for running a stellar campaign.

The Spirit of North Carolina Awards for Campaign Excellence is sponsored annually by the United Way of North Carolina. The awards program provides statewide recognition for exceptional commitment and support to communities through local United Way involvement. The competitive awards are presented to honor corporate and not-for-profit organizations that demonstrate excellence in their United Way Campaigns.

Cummins-Rocky Mount Engine Plant was the 2015 Spirit of NC Award winner. The company was recognized and honored at the United Way of North Carolina Annual Luncheon in Pinehurst, North Carolina. Cummins' is fully vested in the philanthropic community within Nash and Edgecombe Counties. To validate their strong advocacy of improving local communities, the Whitakers plant donated over \$451,000. Annually, their support makes up over 1/3 of the United Way campaign. The employees continue to realize the importance of donating to their local community and that is why the numbers continue to be consistent and commendable.

# CORPORATE & FOUNDATION RECOGNITION

A T & T  
Belk, Inc.  
Boice-Willis Clinic, P.A.  
Century 21  
Chick-fil-A at Cobb Corners  
Daughtridge Sales Company, Inc.  
DeLoatch, Hinton & Peters, PLLC  
Dunbar Community Development Club, Inc.  
Eaton Corporation  
Enterprise Holdings  
Express Employment Professionals  
First Carolina Bank  
Fountain, Roberson, Anderson Agency, Inc.  
Haney, Vann, Bruton & Crawford, L.L.P.  
Horton Rentals  
Jim Dickens Printing & Promotional Products, Inc.  
Keihin Carolina System Technology Foundation Inc.  
Nationwide  
PNC Foundation  
Poppies International, Inc.  
Rocky Mount Medical Park Pharmacy, Inc.  
Rocky Mount Telegram  
RSM US Foundation  
Tarboro Printing Company  
Target

The Boddie-Noell Foundation  
The Cummins Foundation  
The Wright's Center, Inc.  
Triton International Woods  
Tyson Foods, Inc.  
Universal Leaf Foundation  
Universal Leaf North America U.S., Inc.

United Way partnered with the Small Business Committee at the Rocky Mount Area Chamber of Commerce to sponsor a Small Business Challenge (SBC). In efforts to increase fundraising efforts, we sought to engage the small business community in the annual campaign. Special thanks to our businesses who participated in this challenge.

Britt's Yard Work, Inc  
Candlewood Suites  
Clean Sweep  
Comfort Inn  
Daughtridge Sales Company, Inc  
GSM Transportation/Celadon logistics  
K & J Enterprises  
Poppies International  
Word Tabernacle Church

## More Campaign Highlights

City of Rocky Mount Dunking booth helps increase campaign efforts.



Nash UNC Health Care incorporates raffle, plate sales and employees' favorite sports teams to raise awareness and support for United Way.





# EMPLOYEE CAMPAIGNS

American Red Cross –  
 Frederick E. Turnage Chapter  
 Association for Learning Disabled and  
 Handicapped (ALDH)  
 Battle, Winslow, Scott & Wiley  
 BB&T  
 Belk  
 Belt Concepts of America  
 Berry Plastics  
 Blevins, Inc.  
 Boddie-Noell Enterprises, Inc.  
 Boice Willis Clinic, PA  
 Boy Scouts - East Carolina Council  
 Boys and Girls Clubs of Nash  
 & Edgecombe Counties  
 Brame Specialty Co., Inc.  
 Bridgestone Americas – Wilson Plant  
 Bunch & Company, LLP  
 C.W. Williams  
 Cavalier Homes  
 CECO Building Systems  
 CenturyLink  
 Christian Fellowship Homes  
 City of Rocky Mount  
 Comerica  
 Communities In Schools of the  
 Rocky Mount Region  
 Cummins-Rocky Mount Engine Plant  
 Davenport Autopark  
 Down East Partnership for Children  
 Dunbar Community Development  
 Club, Inc.

Eastpointe  
 Eaton Corporation  
 Edgecombe Community College  
 Edgecombe County Government  
 Edgecombe County Public Schools  
 Express Employment Professionals  
 Eye Care Center  
 First Carolina Bank  
 Fountain, Roberson, Anderson  
 Agency, Inc.  
 Girl Scouts – North Carolina Coastal Pines  
 Great American Cookie Co.  
 Harris Teeter  
 Harrison Family YMCA  
 Hospira  
 Keihin Carolina System Technology  
 McGladrey, LLP  
 Meals on Wheels of Rocky Mount  
 Meals on Wheels of Tarboro  
 Mental Health America of the Tar River  
 Region  
 Mr. Tire  
 My Sister's House, Inc.  
 Nash Community College  
 Nash County Government  
 Nash UNC Health Care  
 Nash-Rocky Mount Public Schools  
 Nationwide Insurance  
 New Standard Corporation  
 North Carolina Wesleyan College  
 O'Reilly Auto Parts  
 Opticare Managed Vision

Peacemakers of Rocky Mount  
 Phoenix Management Group  
 Piedmont Natural Gas  
 PNC  
 Poyner Spruill LLP  
 Princeville Senior Citizens Center  
 QVC – Rocky Mount  
 Rocky Mount Telegram  
 Southern Bank & Trust Company  
 Standard Insurance & Realty  
 Stifel Nicolaus & Company, Inc.  
 Stuart C. Irby  
 Suddenlink Communications  
 Swimway  
 Tar River Mission Clinic  
 Tarboro Community Outreach  
 Target Stores  
 Telco Credit Union  
 The Carolinas Gateway Partnership  
 The Salvation Army  
 The Wright's Center  
 Town of Nashville  
 Town of Tarboro  
 Tri-County Industries  
 Tyson Foods, Inc.  
 United Community Ministries  
 United Parcel Service (UPS)  
 United Way Tar River Region  
 Universal Leaf North America U.S., Inc.  
 Vidant Edgecombe Hospital  
 Walmart  
 Wells Fargo

## More Campaign Highlights

**Rocky Mount Telegram  
 generates more than  
 \$1,100 towards  
 United Way's campaign**



# LANDMARK LEADERSHIP FOUNDATION

Members of the Landmark-Leadership Foundation are those individuals who contribute \$500 or more towards the United Way Tar River Region campaign. Each Leadership donor possesses a compassionate spirit and a desire to take action. The result of their investments is a caring community that is resilient in the face of change and responsive to new challenges.

The members of the Leadership Circles are committed individuals who give graciously to our community. They are leaders who possess true generosity and a commitment to today's challenges.

**The Alexis de  
Tocqueville Society**  
**\$10,000**

**The Nashcombe Circle**  
**\$5,000 - \$9,999**

**The Tar River Circle**  
**\$2,500 - \$4,999**

Anonymous (3)  
Douglas E. Anderson  
John H. Austin, Jr.  
Jean & Mayo Boddie  
Dorsey H. & Evelyn M. Glover  
Mike & Bryan Hancock  
C. Allen Hooks  
Dave & Tessie Lavelly  
Tom & Bridget Rogers  
Craig & Cindy Worthy

**The Coastal Plain Circle**  
**\$1,000 - \$2,499**

Anonymous (11)  
Mike Alston  
Wick & Kristi Baker  
Susan Ballentine  
David & Jacquie Blackshear  
Mayo Boddie, Jr.  
Michael W. Boddie  
Kim & Bill Boddie  
Judith B. Bradley  
Richard Bragdon  
Bill & Janet Carver  
Michelle A. Cosimeno  
Robbie B. Davis  
Gary & Donna Fazio  
Gerry Felton  
Mr. & Mrs. John J. Ferebee  
Thomas V. Harris  
Wesley G. Holiday

Peter F. Jackson  
Stacy & John R. Jesso  
L. Renee Johnson  
Vel & Sam Johnson  
Camica J. Perez  
Rhonda W. Jordan  
Meera Kelley  
Linda Knight  
Zee B. Lamb  
Robert P. Larimer  
Marzena T. Laszewski  
Robin Owens Latham  
Michelle & Richard Lavender  
Chris & Eric Miller  
Joe D. Mills  
Dr. & Mrs. Trent L. Mohrbutter  
Ken Pierce  
Dr. & Mrs. William B. Pittman  
Darren M. Rowley  
Robin A. Sanford  
David & Misty Schmitt  
Harvey & Kathey Self  
Jody Smith  
Michael E. and  
Darlene R. Smith  
Warren & Debbie  
Stephenson  
Tommy & Angie Stockdale  
Bill & Millie Walker  
Richard H. & Nancy G.  
Worsinger  
Tom & Kim Zdebiak  
Dr. Robert E. Zipf, Jr.

**The Gateway Circle**  
**\$500 - \$999**

Anonymous (90)  
Dennis J. Abell  
Erin A. Agan  
Roy E. Allen  
Jerry Allsbrook & Cathy Rudd

L. Britt Allsbrook  
Joshua Mylan Anderson  
Jennifer A. Avent  
Carlton R. Baker  
Calvin T. Ballance  
Stephen & Cindy Barnes  
Gwendolyn H. Batchelor  
Lorrie B. Batson  
Chris Anthony Battle  
Mary M. Bellamy  
William A. Benbow  
Eric H. Benz  
Cam & Tonya Blalock  
Nancy D. Blount  
Jonathan & Paula Boone  
Kevin & Debra Boudreau  
Bob & Sue Boyd  
David S. Brantley, M.D.  
Vera Clark Brown  
Betty Blackburn Bruce  
Angela Bryant  
Angela R. Bryant  
Grady V. Bryant  
Mr. & Mrs. Michael T. Bryant  
Ronda Braswell Burgess  
Alice M. Burt  
Wade E. Burton  
Larry L. Bynum  
Rafael A. Cabrera  
Lonnie Chavis  
Martha Chesnutt, M.D.  
Shaler & Michelle Chewning  
Marshall Cofield  
Brenda P. Cogdell  
Dustin Cook  
Kelly L. Cook  
Ganetha Coppedge  
Phyllis Cowell  
Patricia R. Daniel  
Michelle & Alan Davis  
Ron Day

Mahlon W. DeLoatch, Jr.  
Rosemary M. Dorsey  
Willie B. Durham  
Bud & Ruth Ealing  
Carol H. Eatman  
Sion Edwards  
Ronald Ellis  
Ralph & Susan Emerson  
Eric T. Evans  
Roger & Barbara Everett  
Buby Jane Flowers-Batts  
Dr. Angela M. Foster  
Rodney D. Freeman  
Kamalakaran Ganapathy  
Sandra Brake Gardner  
Nick Gaston, Jr.  
Frances A. Gaither  
John R. Gessaman  
Lisa D. Gimber  
Jeremy B. Gordon  
Ron Green  
Stephanie Griffin  
Brad & Sharonette Grooms  
Crystal C. Gwynn  
Sidney W. Haggins  
Demetrius Hagins  
Leslie D. Hall  
Judge John Harper  
Lee & Sylvia Harriss  
Derek Hawkes  
Michael & Shelley Haymore  
Elayne L.W. Henderson  
Jeffrey P. Herrin  
Kenneth O. Hibbler  
Lisa & Jimmy Hicks  
Derek W. Hiler  
Gloria J. Hinton  
Daniel & Carmen Hope  
Sammy L. Hopkins  
Maurice Horton  
Doris A. Howington



# LANDMARK LEADERSHIP FOUNDATION

Kenneth Hunter  
Billy R. Hyman  
Adam & Cathy Ipock  
John Calvin Jackson  
Deborah A. Jeffreys  
Stacy & John Jesso  
Stanley Johndrow  
Jeffrey H. Johnson  
Joe & Tracey Johnson  
Charles K. Jones  
Tammy Jones  
Dale Joyner  
Laura L. Joyner  
Tamika M. Joyner  
John E. Judd  
Willie Kearney  
Chris Kehley  
Brad Kerr  
Mr. & Mrs. William H.  
    Kincheloe  
Dennis R. Knight  
Priscilla A. Knight  
Elena M. P. Koutouzou  
Daniel J. Kraszeski  
Tim Lamm  
Shelia N. Langley  
Debra J. Lanham  
Brent C. Lawton  
Debra F. Lee  
Kevin D. Little  
Michelle Lloyd  
Carlton W. Long  
Leslie T. Long  
Ann P. Lupton  
Larry Lynch

Rodney Lynch  
James C. Marrow, Jr.  
Jimmy & Connie Matthews  
Shakeerah McCoy  
Donald R. McFarlin  
Rick & Shirley McMahan  
Debra Medlin  
Anne & Joe Meyer  
Lee Milligan  
John F. Milliner-Williams  
Edna E. Mitchell  
Ronnie T. Mitchell  
Bonnie Moore  
Dennis E. Moore  
Mark A. Moore  
Stephen J. Moore  
TMMJ  
Brian P. Mutzabaugh  
Lisa Nelson  
Neill D. Nelson  
Mahlon D. Nicholson  
Nancy Nixon  
Tony Norris  
Walter P. Nosay  
Dolanimi O. Ogunkoya  
Johnnie C. Owens  
Greg & Michelle Pait  
Phillip Panepinto  
Demond L. Parker  
Haywood Parker  
Tony & Jacqueline Parker  
David D. Pearson  
Charles W. Penny  
Annese L. Pittman  
Vanette W. Pope

Denice Powell  
Mel & Sylvia Powell  
Anita B. Pridgen  
Timothy Pullen  
Tom & Susan Rackley  
Richard E. Rains  
Ronnie, Michele, & Max Raper  
Jim & Lisa Reid  
Donna H. Reynolds  
Junicah Deshunta  
    Richardson  
Andre` Royal  
Tammy M. Rule  
Jeffrey Wayne Sears  
James L. Sharpe  
Chris Sivills  
Sean & Amy Skaggs  
Deborah C. Smith  
Frank E. Smith  
Keith Smith  
Raymond A. Stander  
Amy Staton  
Jocelyn Danielle Steed  
J. Buckley Strandberg  
John Stratton  
Blair, Margaret, and  
    Jay H. Streater  
Mary & Mike Strickland  
Frederick Miles Taylor  
Gloria J. Terry  
Leroy Thigpen  
Yolanda Lane  
    Takegra Thomas  
Allan Thompson  
Maurice O. Thompson

Sherry Thompson  
Brack & Anne Townsend  
Cathy Turner  
Mike Varnell  
Robert D. Wagner  
Kathryn W. Weeks  
Boone Wheeler  
George G. &  
    Beezie A. Whitaker  
Jenny & Ken White  
Rocky L. Whitley  
Jerome B. Wiggins  
Edwin B. Wilburn  
Basil D. Williams  
Carolyn Williams  
Don & Eileen Williams  
Mark Wilson  
Molly & Barden Winstead  
Jennifer & Matt Worsley  
Carl N. Wright  
Gregory K. Wright  
Kelvin & Cheryl Yarrell

## **Memorial and Honorary Contributions**

In Honor of  
Kyle L. Harris

In Memory of  
Snoopy

*As of December 31, 2015, every effort has been made to verify information for accuracy and completeness for this list of donors to the United Way Tar River Region for the 2015 Campaign. We sincerely apologize if we omitted your name or if your name is listed incorrectly. Please note that some donors have elected to remain anonymous.*

*Please contact the United Way office at 252.937.2213, and we will be happy to make any corrections and include them in our next year's annual report.*

# COMMUNITY DEVELOPMENT & INITIATIVES

## EMERGENCY FOOD & SHELTER PROGRAM

Phase 32 with the EFSP will be completed in April 2016 and we are awaiting the announcement of funds for Phase 33. The funds are based upon our jurisdiction's total number of unemployed as compared to the total number of unemployed in all qualifying jurisdictions. The EFSP Advisory Board oversaw the distribution of \$95,243 awarded for Phase 32 to Local Recipient Agencies that include: The Salvation Army, Christian Fellowship Home of Nash-Edgecombe Counties, Inc., Peacemakers, My Sister's House, REACH (Responsive Assistance to Cooperative Households), St. Andrews Episcopal Church, Tarboro Community Outreach, Inc., United Community Ministries, and United Way (as the administrator). Thank you to the members of the EFSP Advisory Board and Advisory Chair, Warren Stephenson.

Special Thanks to our Advisory Board Members and LRO Representatives

### Board Chair:

Warren Stephenson  
Homeless Advocate

Amy Pridgen-Hamlet  
Nash County Department  
of Social Services

Sister Mary Ann Czaja  
Tarboro Community Outreach

Ron Dyson  
The Salvation Army

Lt. Jonathan Whitaker and  
Lt. Dawn Whitaker  
The Salvation Army

Ginny Mohrbutter  
United Way Tar River Region

Jan Warren  
Meals on Wheels  
of Rocky Mount

Nedra Maryland  
R.E.A.C.H.-Word Tabernacle

Sarah S. Hill  
Nash County Adult Services

Donnell Buckner  
Ron Scott  
MHA-Tar River Region

Jamie Lyles  
The Salvation Army

Chris Miller  
Rocky Mount City Council

Bruce Slavin  
United Community Ministries

Cynthia Kornegay  
My Sister's House

Terrence Wilson, MD  
Medical Rehabilitation

Elizabeth Scott  
United Way Tar River Region

Allen Mitchell  
Mayor's Commission for  
Persons with Disabilities

Carolyn Stern  
American Red Cross -  
Frederick E. Turnage

Kirk Scott  
Christian Fellowship Home

Barry Richardson  
NEED

Brooke Mickelson  
Kim Hickerson  
Eastpointe

Jesse Lewis  
Church on the Rise  
Peacemakers Family Center

Elizabeth Mosley  
St. Andrews Episcopal Church

Marbeth Holmes  
Nash Community College

## FUNDED LOCAL RECIPIENT ORGANIZATIONS

Christian Fellowship Home of Nash-Edgecombe Counties, Inc.  
Church on the Rise, Peacemakers Family Center  
My Sister's House, Inc.  
R.E.A.C.H (Responsive Assistance to Cooperative Households) – Word Tabernacle Church

St. Andrews Episcopal Church  
Tarboro Community Outreach, Inc.  
The Salvation Army  
United Community Ministries  
United Way Tar River Region

## NC GOVERNOR'S OUTSTANDING VOLUNTEER SERVICE AWARD

United Way on a yearly basis administers this process for the state. Both Cummins-RMEP and PNC Bank were nominated by Down East Partnership for Children and each was awarded the NC Outstanding Volunteer Medallion Award at a reception with Governor Pat McCrory. On June 17 United Way hosted a local reception for both companies, Down East Partnership for Children and United Way supporters.





# COMMUNITY DEVELOPMENT & INITIATIVES

## UNITED DAYS OF SERVICE

The Community Development Committee coordinated United Days of Service, June 5 and 6. Thank you Dr. Keith Smith for his leadership, our Community Development Committee members and also Dr. David Lavelly who coordinated the Opticare Vision Van that provided FREE services at the Spaulding Family Resource Center in Spring Hope assisting close to 200 individuals! We also appreciate our partnership with Nash-Rocky Mount Public Schools in promoting this event. Locations of Service Projects included: Peacemakers, Rocky Mount OptiCare Managed Vision Van at Spaulding Resource Center, Spring Hope, United Way Tar River Region, Rocky Mount and Princeville Senior Center, Princeville – Tarboro. We also partnered with First Media Radio and collected and distributed over 30 free fans to those in need.



## NONPROFIT LEADERSHIP AND CAPACITY BUILDING PROGRAM

United Way again partnered with the NC Community Foundation, the Futrell-Mauldin Community Foundation and Reach Out Rocky Mount to host our second local nonprofit summit on May 21 which provided professional development for nonprofits to foster long-term capacity building and innovation within our nonprofit community. Attendance was close to 100, and we received excellent feedback and positive reactions to the local professional development.



## EXCITING CHANGES FOR NC211!

Do you want to know the most pressing needs in your community? Find out with the 211counts.org dashboard of 2-1-1 caller needs. Get real-time, searchable data in a single-to-use format.

[www.211counts.org](http://www.211counts.org) can be a useful tool to assist in writing grants, developing policy, or having

conversation about local community needs. Also, United Way North Carolina has restructured the cost plan for NC 211 to be based on county population/ coverage versus call volume. This will be more cost effective for our United Way. Jennifer Askew, Kaplan University Masters' student, completed her 200-hour internship helping us update our 600 health and human services within our local 211 database. An outside grant will assist with funding our local 211 calls and marketing materials. NC 2-1-1 is a free, 24/7, multilingual, telephone information and referral service. NC 211 may be accessed by calling 2-1-1 or visit [www.nc211.org](http://www.nc211.org). Call volume is still averaging 100+ calls per month with an additional 35 in-house monthly resource calls directly to United Way Tar River Region.



# REFLECTIONS



Finalists pictured above (l to r) Frank Smith, Darren Rowley, Sandra Smith, Angela Bryant, Joseph Smith, Patricia Daniel, Leslie Long and James Johnson.



Our fourth Grand Prize Event sponsored by Davenport Autopark generated great excitement as finalists attempted to crank the car of the 2015 Honda. Angela Bryant, Cummins-Rocky Mount Engine Plant, was the 2015 Grand Prize Winner.

## UNITED WAY RETIREES CONVENE

United Way established a Retiree Program to provide retirees within the region's communities, opportunities to support United Way activities, including active volunteer participation and economic support to the United Way and its partnership agencies. The Team is responsible for providing leadership, recommendations and coordination of program. Special thanks to Mike Smith, VP/Resource Development, for his leadership on this committee.

## ANNUAL COMMUNITY CHAMPIONS' LUNCHEON

Our Eighth Annual Community Champions' Luncheon held at The Gateway Convention Center in Rocky Mount, featured keynote speaker, Calvin Ballance, Plant Manager of Cummins-Rocky Mount Engine Plant. Various individuals, companies and organizations were highlighted as being instrumental to United Way's success. United Way donors, volunteers and supporters were also given special recognition.





# SPECIAL THANKS

*Thank you to all businesses, vendors and individuals who went above and beyond to serve the United Way Tar River Region and our community. Your donation of in-kind support, time, expertise, talent and financial support helps strengthen our community and our collective efforts!*

All United Way Donors  
ALL Volunteers  
33 Oyster Shack  
Allegra Print & Imaging  
Allred Mechanical Services, Inc.  
American Printers  
Anne Kinnaird  
Atlantic Natural Foods  
Benvenue Country Club  
Best Rentals  
Boddie-Noell Enterprises, Inc.  
Boice-Willis Clinic  
Booker T. Washington Theatre & Imperial Centre Staff  
Boy Scouts- East Carolina Council  
Bunch & Company, LLP  
Carolina Mudcats  
Chef Don Sexauer  
Chef Frank Bookhardt  
Chick-Fil-A at Cobb Corner  
Christine's Kitchen  
City of Rocky Mount  
Communities In Schools of the Rocky Mount Region  
Computer Services of Rocky Mount, LLC  
Cummins-Rocky Mount Engine Plant  
Darin Scott  
Data Vault, Inc.  
Davenport Autopark  
David and Marianne Farris  
David Farris  
Debra Morgan-WRAL Anchor  
Dog Lamm  
Don Williams  
Down East Partnership for Children  
Dr. Bill Carver  
Dr. Haywood Parker  
Dr. Meera Kelley  
Dr. Molly Wyatt  
Dr. Trent Mohrbutter  
Drummond's Florist  
Eaton Corporation  
Express Employment Professionals  
Eye Care Center  
Farm Bureau Insurance  
First Carolina Bank  
First Media Radio  
First Presbyterian Church  
Gary & Donna Fazio  
Gary Wingfield  
Gerald Warner  
Girl Scouts – NC Coastal Pines  
Glasgow Sign Service  
Harris Teeter  
Harrison Family YMCA  
Health Stat  
High Tech Communications  
Honey Baked Ham Co. & Café  
Hospira a Pfizer Company  
Image Designs  
Imperial Centre  
Jean Kitchin  
Jersey Mike's Subs (Rocky Mount)

Jim Dicken's Printing  
Joe Proto  
Joel Sullivan  
JRW Associates, Inc.  
Key Fitness  
Kim Zdebiak  
Kirk Scott  
Koretizing One Hour Cleaners  
Krispy Kreme Donuts  
Ladyfingers Caterers  
Life Care Hospital  
Linda Snell  
Lou Reda's American Table  
Lou Reda's an American Table  
Maid for You  
Matt Smith  
Maureen Kroncke  
McLane Carolina Co.  
Meredith Emmett-Third Space Studio  
Meredith Holland  
Michelle Raper  
Mike Hancock  
Milton & Miles  
Monica Seaman  
Moore's Bicycle Shop  
Murray's Auto & Tire  
Nash Community College  
Nash Community College  
Nash County Commissioners  
Nash County Farm Bureau  
Nash County Government  
Nash-Rocky Mount Public School Interns  
Nashville Graphic  
Nature's Own Gallery  
Northgreen Country Club  
One Main Financial  
Performance Heating & Cooling  
Pepsi  
Photography by Allen Hinnant  
Pitstop Shoppe  
Pizza Inn  
PNC  
PNC Bank  
Pridgen Tire and Auto Center  
Providence Bank  
Purvis-Moyer Foot & Ankle  
QVC – Rocky Mount  
Reliable Accounting Solutions  
Riverside Printing  
Robbie Davis  
Rocky Mount Community Foundation  
Rocky Mount Preparatory School Interns  
Rocky Mount Telegram  
Rose Hill Conference Center  
Scott & Early Painting  
Shari Carter  
Sharpe Design (Denise Sharpe)  
Shawn Tant  
Shell Rapid Lube & Autospa  
Signs Now

Snapshots of Success Participants  
Southern Bank & Trust Company  
Spring Hope Enterprise  
Studio L Productions  
Subway of Nashville  
Suddenlink Communications  
Sunset Studios (Garry Hodges)  
Sutton's Framing Gallery  
Tarboro Weekly  
Target Store  
The Main Course @ Belmont  
Town of Nashville  
Turn Key Storage  
Turn-Key Contractors, Inc.  
Twitch Bar & Grill  
United Way Board Directors  
United Way Committees and Chairs  
United Way Donors  
United Way Staff  
United Way Worldwide  
Universal Leaf North America U.S. Inc.  
Warren Stephenson  
WHIG-TV  
William Lynch Plumbing  
WRAL-TV 5

Board of Directors

## **United Way Volunteers and Committees**

- Building Committee
- Campaign Advocates
- Community Development Committee
- Community Leaders Focus Group
- Emergency Food & Shelter Advisory Board
- Finance Committee
- Funded Partner Agencies
- Fundraising Committee & Advocates
- Governance Committee
- Loaned Employees
- Marketing & Communications Committee
- Monster Dash Committee
- Nonprofit Summit Committee
- Planning Committee
- Professionals Focus Group
- Retiree Focus Group

## **United Way Office Support**

Darlene Smith  
Don & Annette Coggins  
Donna Fazio  
Judy Woelke  
Cindy Bryant  
Lillian Fruster

## IMPACT TEAMS

### **Income Impact Team**

Bob Davis  
Brittany Morgan  
David Jones  
Keith McGee  
Lee Milligan  
Lenwood Ross  
Loretta Braswell (Leader)  
Michael Roupp  
Richard Herring  
Ronald Price  
Vanessa Whitaker (Leader)  
Yolanda Grant

### **Education Impact Team**

Betty Harmanson  
Denise Purcell Wright  
Dorsey Glover  
Emanuel Shell  
Frances Gaither  
Gwendolyn E. Hyman (Leader)  
Joseph Garner  
Kimberly Haggerty  
Lisa Shelton  
Margaret Early  
Mike Varnell  
Richard Uhrin  
Robin Latham (Leader)  
Shirley Hedgepeth (Leader)  
Tamisha Patterson

### **Health Impact Team**

Al Wright  
Angela Edgerton  
Cheryl Bryant  
Christine Cherry  
Donnie Daniels  
Eric Miller (Leader)  
Harriet Buss  
Jo Webb  
Laura Joyner (Leader)  
Michele W. Cherry  
Phyllis Johnson  
Van Holt (Vandora)  
William A. Craig

• Team Leader

\* served until 2015



**UNITED WAY TAR RIVER REGION**

*Serving Nash & Edgecombe Counties*

Phone: 252.937.2213 • 252-823-8919

[www.unitedwaytrr.org](http://www.unitedwaytrr.org)



Learn More About us

